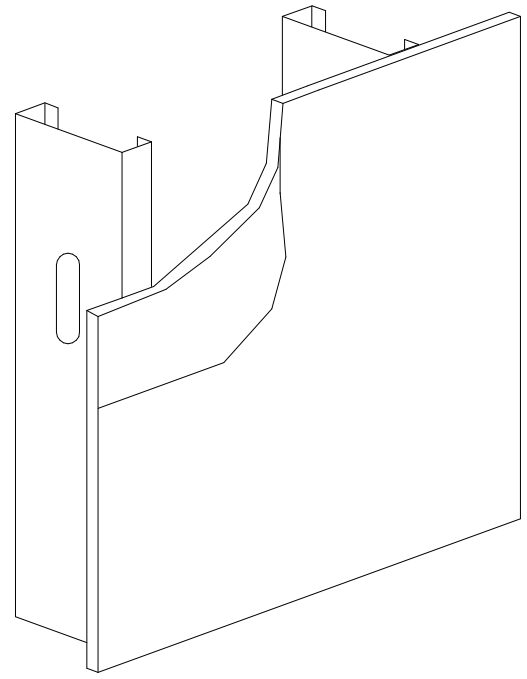


STRUCTURAL PLYWOOD / CDX,
5/8" MIN. THICKNESS
-ZONES 1, 2, AND 4 (REF. S-102) #10
BUGLEHEAD SCREWS @ 4" O.C. EDGES AND
6" FIELD
-ZONES 3, AND 5 (REF. S-102) #10
BUGLEHEAD SCREWS @ 4" O.C. EDGES AND
4" FIELD
DENSEGLASS
-ZONE 4 (REF. S-102) #10 MIN. WAFERHEAD
SCREWS @ 4" O.C. EDGES AND 6" FIELD
-ZONE 5 (REF. S-102) #10 MIN. WAFERHEAD
SCREWS @ 4" O.C. EDGES AND 4" FIELD



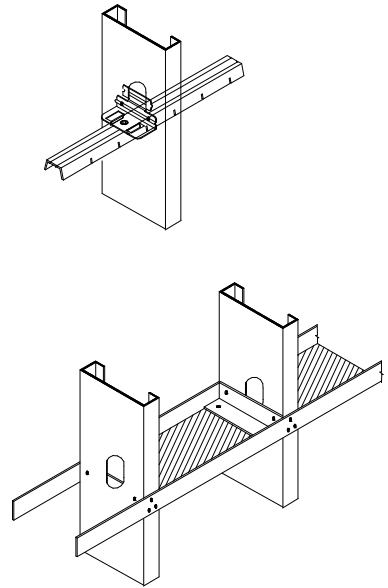
1 SHEATHING FASTENER REQUIREMENTS
SCALE N.T.S.

2 STL. NETWORK STIFFWALL SW-S & TYPE FS BRACED WALL TOP
CONN.
SCALE N.T.S.

3 STD. STUD TO RUNNER TRACK CONNECTIONS
SCALE N.T.S.

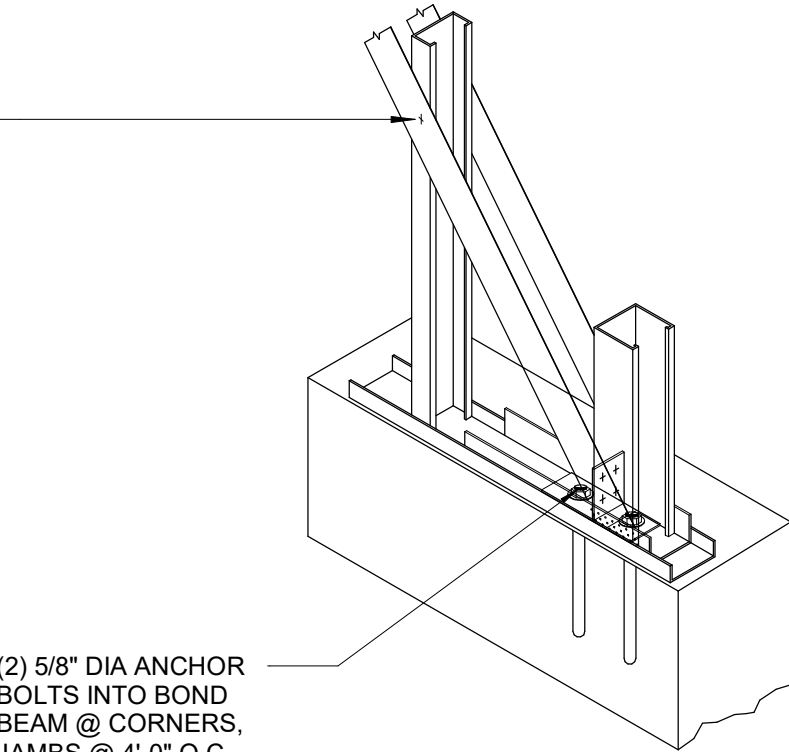
4 STD. RUNNER TRACK TO CMU/CONC. CONNECTIONS
SCALE N.T.S.

BLOCKING / BRIDGING
- PROVIDE MANUFACTURERS STD. MECHANICAL
BLOCKING (TRACK OR OTHER FULL STUD DEPTH
SECTION) @ 4' O.C. MAX. WHERE STUDS ARE
UNSHEATHED OR SHEATHED ON ONE-SIDE ONLY
- PROVIDE MANUFACTURERS STD. MECHANICAL
BRIDGING @ 4' O.C. MAX. WHERE STUDS ARE
SHEATHED ON BOTH SIDES
- ALTERNATE AND/OR ADDITIONAL BRACING MAY
BE SPECIFIED IN DRAWINGS



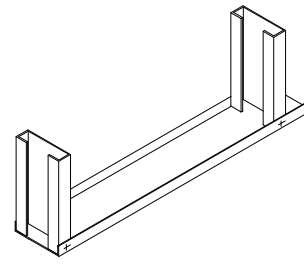
5 BRIDGING & BLOCKING
SCALE N.T.S.

14 GA. FLAT STRAP (FS)
BRACES ON EA. SIDE (TYP
ALL STUD WALLS)
CONNECTED W/ (1) #10
TEK SCREW @ EA. SIDE
OF STUDS

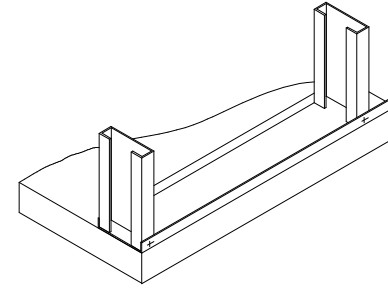


6 STIFFWALL SW & TYPE FS BRACED WALL BASE CONNX.
SCALE N.T.S.

RUNNER TRACKS
(2) #10-12 TEK SCREWS EA.
LEG (3/4" MIN. L), (4) TOTAL
800T200-54/43



RUNNER TRACKS
800T200-54/43
(2) 1/4"x1-3/4" CONC. SCREWS AT STUDS AND (1)
OF SAME BTW. STUDS



LIGHT GAUGE FRAMING, TRUSSES & SYSTEMS

- A. ALL LIGHT GAUGE STEEL FRAMING SHALL CONFORM TO THE "SPECIFICATIONS FOR THE DESIGN OF COLD-FORMED STRUCTURAL STEEL MEMBERS," AISI."
- B. ALL LIGHT GAUGE STUDS & JOISTS SHALL BE AS SHOWN IN FRAMING PLAN MINIMUM.
- C. ALL STUDS SHALL BE "C" SHAPE, U.O.N.
- D. MATERIALS, U.O.N.:
54, 68 AND 97 MIL STUDS 50 KSI
27, 33, AND 43 GA. STUDS 33 KSI
RUNNERS AND ACCESSORIES 33 KSI
- E. PROVIDE MANUFACTURERS STANDARD STEEL RUNNERS, BRIDGING, BLOCKING, LINTELS, CLIP ANGLES, BRACING, REINFORCEMENTS, FASTENERS, ETC. AS REQUIRED TO PROVIDE A COMPLETE STEEL FRAMING SYSTEM CAPABLE OF ACCOMMODATING THE LOADS PRESENTED IN THE CONSTRUCTION DOCUMENTS.
- F. ALL PARTS AND ACCESSORIES SHALL BE FORMED FROM STEEL HAVING A G-60 GALVANIZED COATING MEETING THE REQUIREMENTS OF ASTM A525 / ASTM A653.
- G. ALL CONNECTIONS SHALL BE (4) #10-12 TEK SCREWS AS A MINIMUM, U.O.N. OR AS REQUIRED BY MANUFACTURER AND APPROVED BY STRUCTURAL ENGINEER.
- H. INSTALL METAL FRAMING IN ACCORDANCE WITH MANUFACTURERS INSTRUCTIONS AND/OR SPECIFICATIONS.
- I. FRAME BOTH SIDES OF EXPANSION JOINTS, ALLOWING FOR ADEQUATE MOVEMENT AS REQUIRED.
- J. SPLICES IN STUDS SHALL NOT BE PERMITTED.
- K. LIGHT GAUGE FRAMING "SYSTEMS" SHALL INCLUDE ALL NECESSARY PARTS AND ACCESSORIES REQUIRED TO FORM A COMPLETE "SYSTEM," INCLUDING, BUT NOT LIMITED TO BRIDGING, BRACING, CLIPS, SHEAR BLOCKING, WEB STIFFENERS, AND HARDWARE - TEMPORARY AND PERMANENT.
- L. U.O.N., ANCHORAGE OF LIGHT GAUGE FRAMING SYSTEMS INCLUDING INDIVIDUAL SUPPORTS SHALL BE BY THE SYSTEM / TRUSS SUPPLIER.
- M. ALL PROPOSED ALTERNATE CONNECTION CLIPS SHALL BE SUBMITTED TO BUILDING ENGINEER FOR REVIEW. SUBMITTAL SHALL INCLUDE APPLICABLE LOAD TABLES FOR CLIPS.
- N. ALL DETAILS PRESENTED HEREIN (THIS DRAWING) ARE U.O.N. IN PROJECT SPECIFIC DRAWINGS.
- O. ALL LIGHT GAGE FINAL DESIGN BY SPECIALTY ENGINEER HIRED BY GENERAL CONTRACTOR. DETAILS PRESENTED IN THESE DRAWINGS ARE FOR REFERENCE ONLY AND MINIMUM ACCEPTABLE DESIGN CRITERIA. PROVIDE SIGNED AND SEALED SHOP DRAWINGS BY A PROFESSIONAL STRUCTURAL ENGINEER LICENSED IN THE STATE OF THE PROJECT.

SEE GENERAL NOTES ON THIS SHEET.
FOR GENERAL INFORMATION.
REFER TO DETAIL 4 IN THIS SHEET FOR
STUDS TO TOP TRACKS CONNECTION

6"x14 GA. STRAP
BRACING TYP. EA.
SIDE OF STUD WALL

14" GAUGE 1/8" WELDED,
GUSSET 6" MINIMUM TO
ACCOMMODATE STRAP

5/8" DIA.
SIMPSON TITEN
HD BOLTS
EVERY 4'-0" O.C.

DOUBLE STUDS
AT ENDS OF EA.
X-BRACED
FRAME

DOUBLE STUDS
AT ENDS OF EA.
X-BRACED
FRAME

TOP TRACK 800T200-43

CONT. BLOCKING
EVERY 6'-0" PER BRIDGE
DET. IN THIS SHEET

1/8" TYP.

1/8" TYP. AT
STRAPS

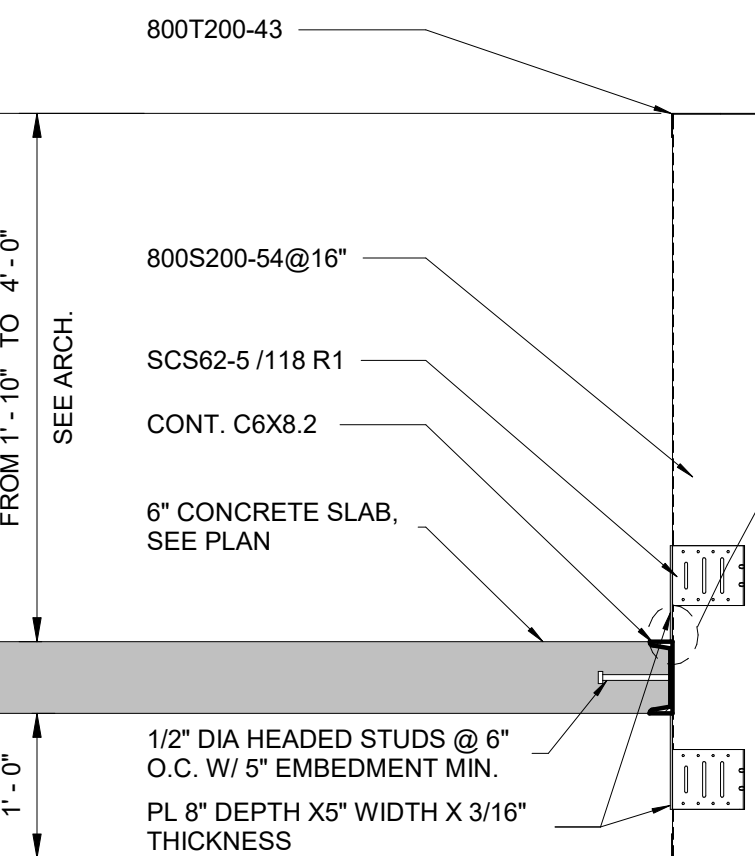
SIMPSON HD3B HOLD DOWN
OR DOUBLE CLIP/ BOLTS PER
DETAIL 6 IN THIS SHEET

REFER TO DETAIL 6 IN
THIS SHEET FOR BOTTOM
TRACK & ATTACHMENT
TO CONC. TIE BEAM

WALL BRACING

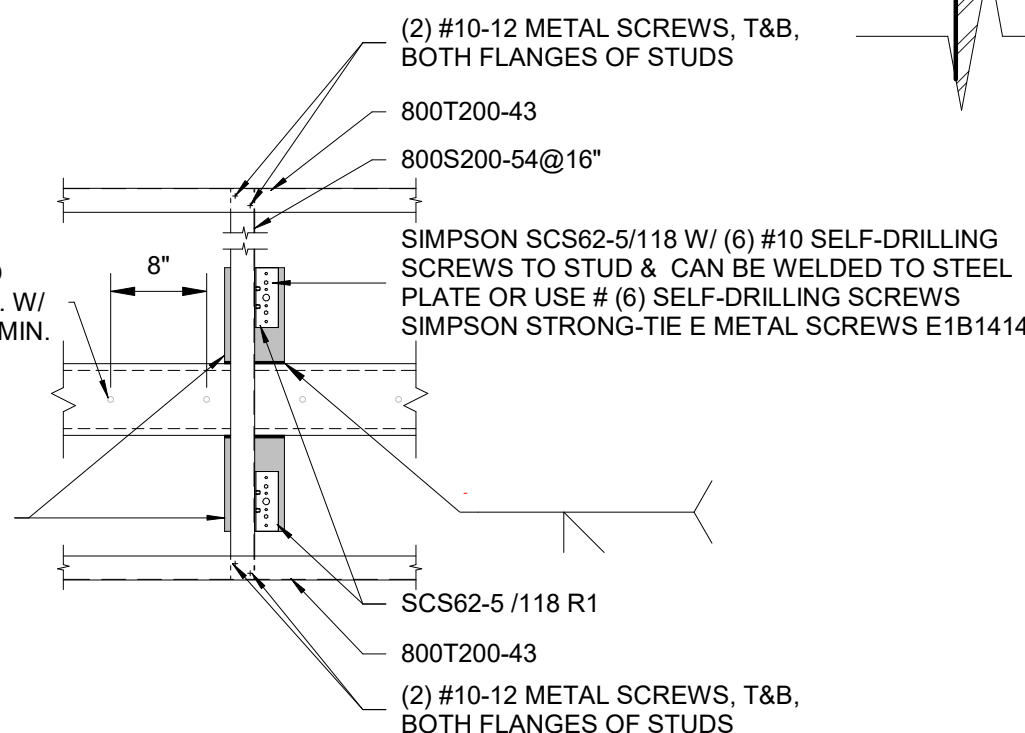
7 TYP LIGHT GAGE WALL
SCALE N.T.S.

T/ PARAPET
EL. SEE PLAN



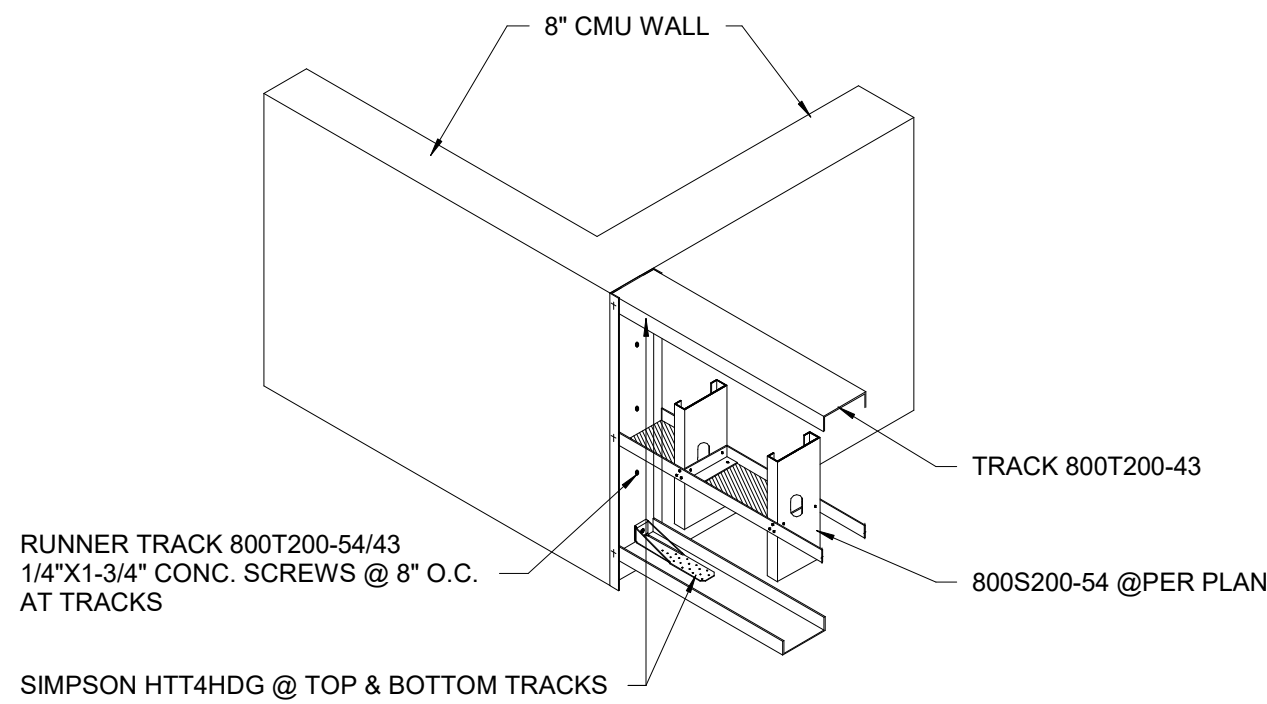
SIDE VIEW

FRONT VIEW

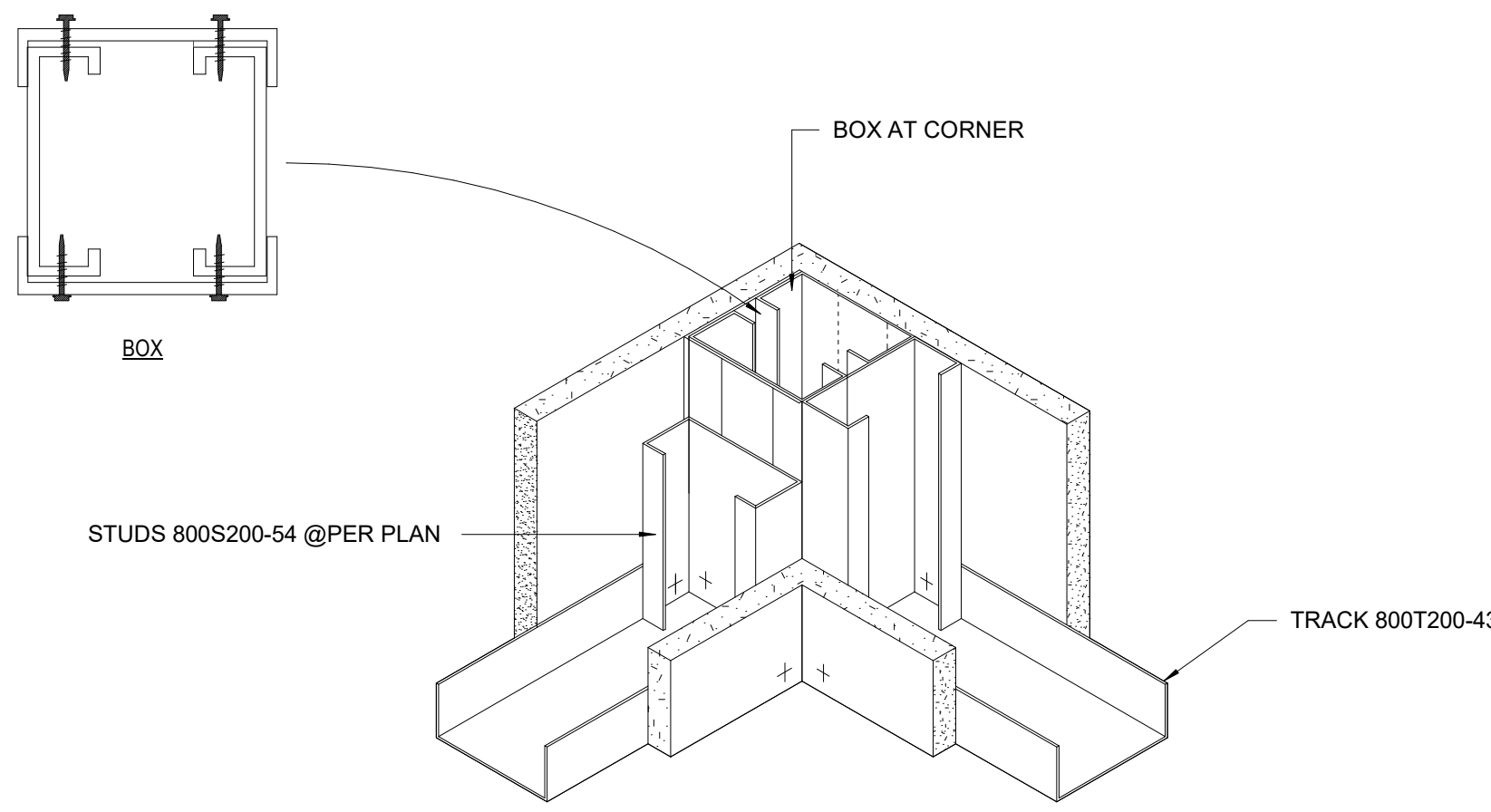


PL 8" DEPTH X5" WIDTH
X 3/16" THICKNESS

CONT. C6X8.2



8 LIGHT GAUGE TO CMU WALL
1/2" = 1'-0"



9 LIGHT GAUGE AT CORNER
SCALE N.T.S.

10 PARAPET LIGHT GAUGE DETAIL.
SCALE N.T.S.

REVISIONS:		
No.	DATE:	DESCRIPTION
1	04-08-2025	CITY COMMENTS

DRAWN: MG	CHECKED: RA
APPROVED: RA	ISSUE DATE: 11-26-24

SHEET NAME: GENERAL LIGHT GAUGE INFORMATION	
PROJECT NUMBER: 24-925	VISIONEERING NUMBER: VN24-165
SHEET NUMBER: S-104	